

Higher  
Academic  
A levels

# A Level Mathematics

## Entry Requirements

5 GCSE's at grade 6 including Mathematics GCSE grade 7. If the course is over-subscribed the department may administer a short entry test.

## Mathematics at Westfield

This course builds directly on the foundation of the GCSE Higher Level syllabus. In particular it presupposes skill in basic algebraic manipulation and the ability to work logically through multi-stage problems.

## **Course Content**

### **Year 12**

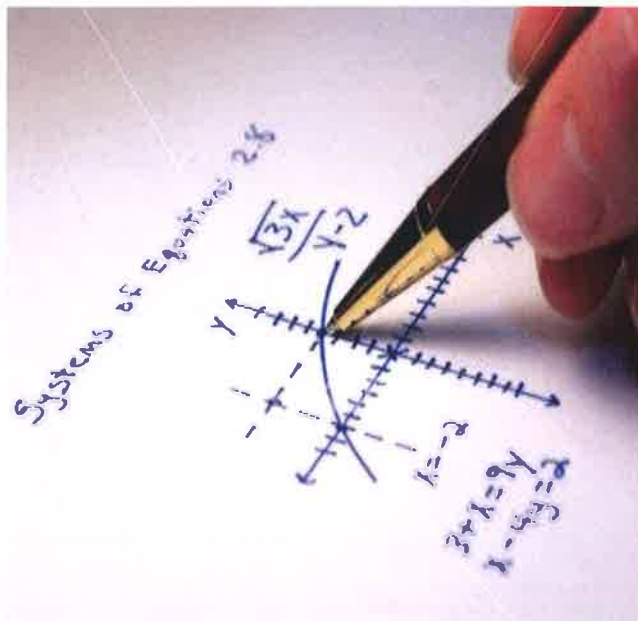
**Pure Maths** - Polynomials, Coordinate geometry, circle geometry differentiation, integration  
Trigonometry, Binomial expansion, Vectors, Exponentials and Logarithms

**Applied Maths (Statistics and Mechanic)** Sampling, Representing and Interpreting Data, Probability, Statistical distributions, Statistical Hypothesis testing

### **Year 13**

**Pure Maths** – Algebra and Functions, Trigonometry, Parametric Equations, Sequences and Series, Binomial Expansion, Differentiation, Integration, Numerical methods, Vectors

**Applied Maths (Statistics and Mechanic)** – Correlation and Regression, Probability, the Normal Distribution, Kinematics, Dynamics, Moments



## Careers in Mathematics

- Accountancy
- Sports Science
- Medicine
- Finance Manager
- Teaching

## Suitable Candidates

Candidates will be hardworking, motivated and independent learners.

Students also need to have a keen interest in studying Mathematics.

For further information regarding Mathematics, please see Mr. Palmer

# A Level Further Mathematics

## Entry Requirements

5 GCSEs at grade 6 including Mathematics GCSE grade 8. If the course is oversubscribed the department may administer a short entry test.

## Further Mathematics at Westfield

This course builds directly on the foundation of the GCSE Higher Level syllabus. It is designed for students who desire to prepare for study of Maths at University, or any career which is quantitative-based.

## **Course Content**

### **Year 12**

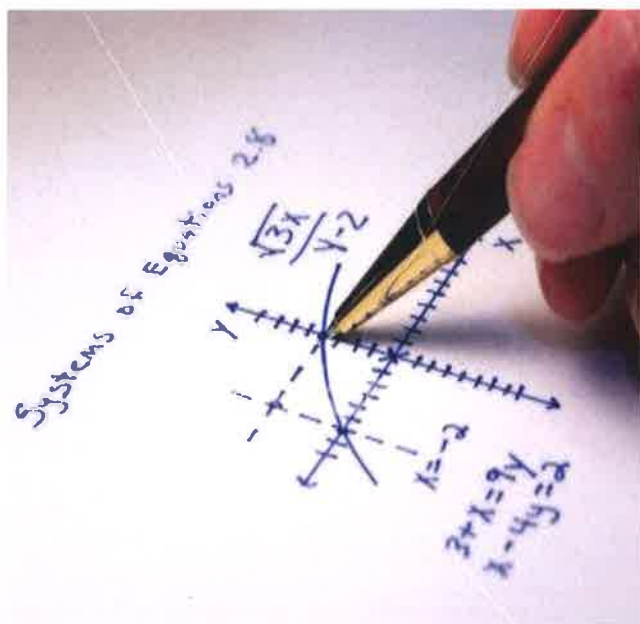
**Core Pure and Further Pure:** Proof, Complex numbers, Matrices, Further algebra and functions, Further calculus, and Further Vectors; and, Further Trigonometry, Inequalities, Further Vectors, Further Numerical Methods, Coordinate Systems

**Applied Maths (Mechanics)** Momentum and Impulse, Collisions, Centre of mass, Work and energy, Elastic strings and springs

### **Year 13**

**Core Pure and Further Pure –** Complex numbers, Further algebra and functions, Further calculus, Polar coordinates, Hyperbolic Functions; Differential equations

**Applied Maths (Mechanics) –** Momentum and impulse, Work and energy, Elastic strings and springs and elastic energy, Elastic collisions in one dimension, Elastic collisions in two dimensions



## Careers in Mathematics

- Actuary
- Chartered Accountant
- Medicine
- Finance Manager
- Teaching

## Suitable Candidates

Candidates will be hardworking, motivated and independent learners.

Students also need to have a keen interest in studying Mathematics.

For further information regarding Further Mathematics, please see Mr. Palmer

# A Level Biology

## Entry Requirements

Minimum of 5 GCSE's Grade 6 including English and Maths.  
Minimum of grade 7/6 in Combined Science. Minimum of grade 7 in Biology for separate science, and a grade 6 in the other two sciences.

## Biology at Westfield

The aims of the GCE in Biology are to enable students to:

- Develop their interest and enthusiasm in Biology and develop an interest in further study and careers in the subject
- Appreciate how society makes decisions about Biology related issues and how Biology contributes to the success of the economy and society
- Develop and demonstrate a deeper appreciation of the skills, knowledge and understanding of how science works
- Develop essential knowledge and understanding of different areas of Biology and how they relate to each other

### Key Features

- New and innovative approach to Biology
- Content taught through six contemporary modules to motivate students
- Exclusive dedicated website, multimedia resources and course texts
- Online, specifically devised activities to support topics. Online activities to develop and support related science, Maths and ICT skills
- Downloadable past papers and mock papers
- Internally assessed AS exam after Year 12 followed by external exam to complete the A level course

### Course Content **OCR A**

Module 1 – Development of practical skills in biology

Module 2 – Foundations in biology

Module 3 – Exchange and transport

Module 4 – Biodiversity, evolution and disease

Module 5 – Communication, homeostasis and energy

Module 6 – Genetics, evolution and ecosystems

The practical endorsement in Biology which is internally assessed is also required. Three exams will be sat at the end of the 2 year course.



## Careers in Biology

- Medicine Veterinary
- Science Dentistry
- Physiotherapy
- Neurology
- Biochemistry
- Forensic Science
- Sports Science
- Psychology

## Suitable Candidates

Will appreciate the tentative nature of scientific knowledge and be able to communicate information and ideas in appropriate ways using appropriate terminology.

Must be able to consider applications and implications of science and appreciate their associated benefits and risks, consider ethical issues in the treatment of humans, other organisms and the environment

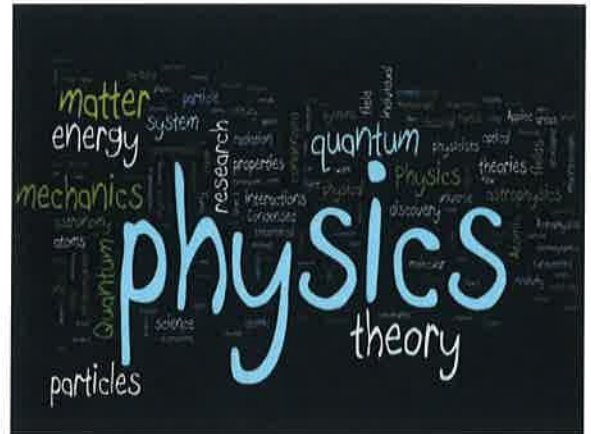
In addition appreciate the role of the scientific community in validating new knowledge and ensuring integrity and appreciate the ways in which science is used to inform decision making about issues to benefit society.

For further information regarding Biology, please see Ms Rafter or Mr Keys.

# A Level Physics

## Entry Requirements

Minimum of 5 GCSEs at grade 9-5 including: for Triple Science students – grade 7 in Physics plus at least a numeric grade 6 in Maths. For Double Science students - grade 7+ in GCSE Core Science and Additional Science both with a grade 7+ and a grade 6+ in GCSE Maths.



## Physics at Watford Boys

A Level Physics provides excellent opportunities for the study of Science beyond GCSE. The course carefully builds on GCSE knowledge, covering the fundamental topics early on to give a firm basis for later study as well as developing useful and more sophisticated practical skills. Students are encouraged to understand the processes of physics and the way the subject develops through experiment, theory, insight and creative thought. The dependence of physics on good mathematical analysis is constantly emphasised and the ability to communicate ideas clearly and concisely is also essential. Physics is conceptually challenging and should appeal to students with a curiosity about the world and its place in the universe.

### **Course Content**

#### **Component 1 Newtonian Physics**

Basic physics, kinematics, dynamics, energy concepts, circular motion, vibrations, kinetic theory and thermal physics.

**Component 2 Electricity and the Universe** Conduction of electricity, resistance, D.C. circuits, capacitance, and solids under stress, electrostatic and gravitational fields of force, using radiation to investigate stars, orbits and the wider universe.

#### **Component 3**

1. The nature of waves, wave properties, refraction of light, photons, Lasers, nuclear decay, particles and nuclear structure, nuclear energy, magnetic fields, electro-magnetic induction, plus: Choice of 1 option from 4: A:

Alternating currents B:

Medical physics

C: The physics of sports

D: Energy and the environment

#### **The Practical Endorsement**

Experimental physics and practical competency are assessed via the non-exam 'practical endorsement' which is carried as a series of 12 compulsory experiments and other practical activities.

## Careers in Physics

- Cosmologist
- Technology
- Teaching
- Medicine

## Suitable Candidates

Candidates will be hardworking, motivated and independent learners. Students also need to have a keen interest in studying Physics.

For further information regarding Physics, please see Ms Rafter or Mr Keys.



# A Level Chemistry

## Entry Requirements

Minimum of 5 GCSE's Grade 6 including English and Maths. Minimum of grade 7/6 in Combined Science. Minimum of grade 7 in Chemistry for separate science, and a grade 6 in the other two sciences.

## Chemistry at Westfield

The first year of the chemistry course builds on the knowledge and understanding of Chemistry developed at GCSE level. The course aims to stimulate interest in and enjoyment of chemistry, to foster imaginative, logical and critical thinking, to demonstrate the wider application of chemical knowledge, showing appreciation for social, environmental, economic and technological contributions to society. It integrates theory and experimental work, developing investigative and manipulative skills. Students are encouraged to develop their scientific communication skills through research, discussion and written work.

The second year of the course is a natural progression from the first year and further develops the principles studied, as well as incorporating new ideas.

### Course content A

#### Level

Module One— Development of Practical skills

Module Two— Foundation in Chemistry Module

Three— Periodic Table and Energy Module Four— Core Organic Chemistry

Module Five—Physical Chemistry and Transition Elements

Module Six — Organic Chemistry and Analysis.

#### Assessment

Students will sit three papers at the end of this two year course:

- Paper One—Periodic table, elements and physical chemistry (Module 1,2,3 and 5)
- Paper Two—Synthesis and analytical chemistry (Module 1,2,4 and 6)
- Paper Three—Unified chemistry



## Careers in Chemistry

- Forensic Science
- Medicine / Dentistry
- Pharmacy
- Optometry
- Nursing
- Engineering
- Teaching

## Suitable Candidates

Chemistry students need to appreciate the tentative nature of scientific knowledge and be able to communicate information and ideas in appropriate ways using appropriate terminology.

Students must be able to consider the applications and implications of science and appreciate their associated benefits and risks. Students will need to consider a number of ethical issues in the treatment of humans and the environment. They will need to appreciate the role of the scientific community in validating new knowledge and ensuring integrity and appreciate the ways in which science is used to inform decision making for the benefit of society.

Candidates must be prepared to use a variety of sources to broaden knowledge and understanding and undertake a lot of independent study outside of school

# A level Economics

## Entry Requirements

A minimum of grade 6 in English & Maths.

## Economics at Westfield

This course allows pupils to develop knowledge and understanding of economics, as well as an appreciation of the contribution of economics to an understanding of the wider economic and social environment. Students will learn to use an enquiring, critical and thoughtful approach to the study of economics and an ability to think as an economist. Furthermore, the course will develop in students the skills, qualities and attitudes which will equip them for the challenges, opportunities and responsibilities of adult and working life.

Students are examined in 3 papers, which broadly cover Microeconomics – the study of the behaviour of individuals and firms – and Macroeconomics – the study of the behaviour of the whole economy. The units are all examined at the end of the two years.

You will learn about abstract concepts and models and their application of to businesses, the UK economy and the wider world. The themes of the content are highlighted below:

Theme 1: Introduction to markets and market failure

Theme 2: The UK economy – performance and policies

Theme 3: Business behaviour and the labour market

Theme 4: A global perspective

### **Course Content**

Paper 1 — Markets and Business Behaviour

Paper 2 — The National and Global Economy

Paper 3 — Microeconomics and Macroeconomics

The subject fits well with either science or art subjects. It involves essay writing and a good understanding of numbers.



## Careers in Economics

- Business Analyst
- Economist
- Stockbroker
- Investment Banker
- Politician

## Suitable Candidates

Although all assessments are examination based, computer access will be advantageous for accessing resources, keeping up to date with current affairs, and completing homework assignments. An interest in current affairs, in order to keep up to date with the latest economic Situation is recommended.

For further information regarding Economics, please see Mrs Otung

# A level English Literature

## Entry Requirements

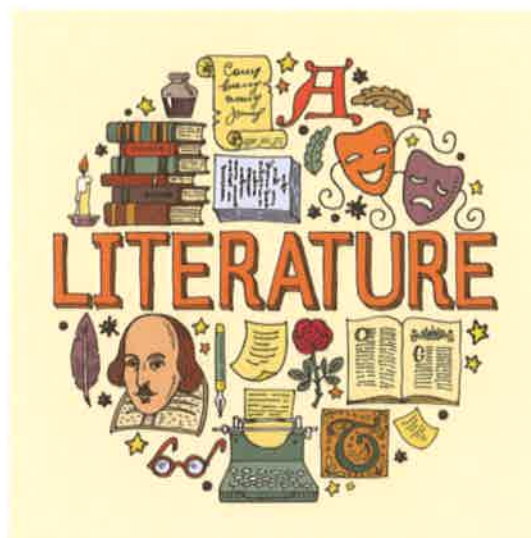
A minimum of 5 GCSEs at 9-6 including English Literature and English Language grade 6 and Maths grade 5.

## English Literature at Westfield

English Literature is an exciting subject to study. The aim of this course is to further a critical approach to English Literature by engaging with drama, prose and poetry texts, each written in its own unique context. Lessons are discursive; however, you are expected to not only take notes but to add to these during your independent study time. Homework tasks will range from the creative with preparations for scripts and performances through to extended writing tasks, so it is vital that you are prepared to be innovative and to develop and refine your essay-writing skills! This A Level has a heavy focus on the essay-writing component in preparation of the exams, so you should be prepared to draft, write and re-draft biweekly essays.

You sit two papers at the end of the two years. One paper focuses on texts from the traditional literary canon while the other explores modern literature, meaning you get the chance to reflect on how literature has changed across time—in fact, each paper contains a comparison question where you're expected to do just this!

Lastly, an extensive coursework unit allows you to develop analyses of Gothic texts which interest you. You are expected to create your own coursework question and choose your own Gothic text to compare against *Frankenstein* by Mary Shelley. This gives you some freedom and scope to evaluate the aspect of Gothic texts that you find most interesting and gives you some control over your own coursework.



## Careers

Degree courses English Literature will help you enter:

· English Literature, English Language, Creative Writing, Psychology, Journalism, Media, Law, Education, Politics, Sociology, Drama, Education and many more!

English is a desirable subject at A Level due to the communication and analytical skills that it develops, which are crucial for many higher-level and technical jobs. In addition, the study of literature broadens your perspective and understanding of the world we live in.

## Suitable Candidates

- Someone with good organisational skills so that you can organise your folder, manage your time to meet essay deadlines and use study periods productively.
- Someone who is an avid and dedicated reader.
- Someone who is enthusiastic in engaging with debates about feminism, psychoanalysis and the issues affecting different societies (including past societies and modern society)

For further information regarding English Literature, please see Mr Black



# A Level French

## Entry Requirements

A minimum of 5 GCSEs at grade 6 including English Grade 6 and GCSE French Grade 6.

## French at Westfield

We will be studying A Level following the AQA syllabus. This is a brand new course and will assess students on the four skills of listening, reading, writing and speaking.

The course is exciting as it allows pupils to develop their linguistic skills whilst gaining an understanding about aspects of culture and society.

Areas of study follow these themes:

- 1) Social issues and trends
- 2) Artistic culture
- 3) Grammar
- 4) Option of literary text or films

Students will be required to translate into and from the target language, therefore deepening their knowledge and understanding further. At A Level students will Also be able to undertake a research project into an aspect of the target language culture.

## How is it examined?

**Paper 1 :** Listening, Reading and Writing Exam

2 hours 30 minutes 100 marks making up 50% of the exam.

**Paper 2:** Writing

2 hours 80 marks 20% of the exam

**Paper 3:** Speaking

21-23 minutes (including 5 minutes preparation time)

60 marks totalling 30 % of the exam.

Additionally students taking A Level will develop research skills in French and demonstrate the ability to initiate and conduct individual research. They will get to use authentic resources and the internet and develop analytical and critical judgement skills.



## Careers in French

- Tourism
- Civil Service
- Journalism
- Education
- Translation
- Interpreter
- Banking and Finance

## Suitable Candidates

You need to be a motivated individual who is keen to work hard.

You will be interested in the culture of other countries, and you will have a passion for the French language.

For further information regarding French, please see Mrs Ampah-Korsah.

# A Level Spanish

## Entry Requirements

A minimum of a GCSE English Grade 6 and GCSE Spanish Grade 6 is needed to take Spanish at A-Level.



## Spanish at Westfield

We will be studying A Level following the AQA syllabus. This is a brand new course and will assess students on the four skills of listening, reading, writing and speaking.

The course is exciting as it allows pupils to develop their linguistic skills whilst gaining an understanding about aspects of culture and society.

Areas of study follow these themes:

- 1) Social issues and trends
- 2) Artistic culture
- 3) Grammar
- 4) Option of literary text or films

Students will be required to translate into and from the target language, therefore deepening their knowledge and understanding further. At A Level students will also be able to undertake a research project into an aspect of the target language culture.

### How is it examined?

**Paper 1 :** Listening, Reading and Writing Exam

2 hours 30 minutes 100 marks making up 50% of the exam.

**Paper 2:** Writing

2 hours 80 marks 20% of the exam

**Paper 3:** Speaking

21-23 minutes (including 5 minutes preparation time)

60 marks totalling 30 % of the exam.

Additionally students taking A Level will develop research skills in Spanish and demonstrate the ability to initiate and conduct individual research. They will get to use authentic resources and the internet and develop analytical and critical



## Careers in Spanish

- Tourism
- Civil Service
- Journalism
- Education
- Translation
- Interpreter
- Banking and Finance

## Suitable Candidates

You need to be a motivated individual who is keen to work hard.

You will be interested in the culture of other countries, and you will have a passion for the Spanish language.

For further information regarding Spanish, please see Mrs Ampah-Korsah.



# Traditional A Levels

# A Level Politics

## Entry Requirements

A minimum of 5 GCSEs at 5+ including Maths with English at grade 6+ and grade 6+ in History.

## Politics at Westfield

A-Level Politics is a course designed to help you understand the country and the world that you live in. In Politics you will study three different areas;

### **Government & Politics in the UK**

In this unit you will look at the role of the Government in the UK. This will include; the British Constitution, the role of Parliament and the Prime Minister, Elections and Political Parties.

### **Government & Politics in the USA and Comparative Politics**

In this unit you will study politics in the USA in the following areas; role of Government, the judiciary, legislature and executive, Elections, Political Parties and Civil Rights. Students will also take part in a comparative study between the US and UK systems of Government.

### **Political Ideas**

In this unit you will study some of the core political ideas. These are; Liberalism, Socialism, Conservatism and one other. For each core idea you will study their origins, views on human nature, the economy, society and the role of the Government.

### **Examinations**

For Politics A-level you will be assessed through three written examinations. Each exam will be worth 33% of your overall grade. You will sit the following exam papers...

- **Paper 1** – Government and Politics of the UK
- **Paper 2** – Government and Politics of the USA and comparative Politics
- **Paper 3** – Political Ideas



## Careers in Politics

- Law
- Business
- Government
- Education
- Journalist
- Researcher

## Suitable Candidates

Candidates will need to have a grade 6+ in GCSE History and English.

For further information regarding Politics, please see Miss O'Connor or Ms Egan.



# A Level History

## Entry Requirements

A minimum of 5 GCSEs at 5+ including Maths with English at grade 6+ and grade 6+ in History.

## History at Westfield

Due to popular demand, we have made changes to our successful Advanced GCE History course. This course will enable you to understand the country and the world you live in. You will be finding out about political, economic and social developments in contemporary Britain. You will study the key aspects of American History in the Twentieth Century from Prohibition, the Wall Street Crash and the New Deal to Watergate, feminism and race relations. Students will also begin a study of Ireland and its' relationship with England over time. You will also have the opportunity to pursue your own historical enquiry. This is a two-year course.

### **Course Content Year 12**

- Britain transformed, 1918-97
- The USA: c1920-55: Boom, Bust and Recovery

### **Year 13**

- Ireland and the Union, c1774-1923
- Internally assessed coursework

Three units will be assessed by examination at the end of year 13; the Historical Enquiry will be internally assessed.



## Careers in History

- Law
- Business
- Government
- Education

## Suitable Candidates

Candidates will have a grade 6 in GCSE History.

For further information regarding History, please see Miss O'Connor or Ms. Egan

# A Level Geography

## Entry Requirements

A minimum of 5 GCSEs at 5+ including grade 6+ in Geography.

## Geography at Westfield

Geography is an exciting course which provides students with a wide range of transferrable skills and equips students with the knowledge for the future. This course builds on topics studied in GCSE Geography and takes these topics to greater depths.

## Specification

Edexcel GCE Geography (2016)

## Course Content

### Unit 1

#### Physical Geography

Exam 30% weight

- Tectonic Processes and Hazards
- Landscape Systems, Processes and Change
- The Water Cycle and Water Insecurity
- The Carbon Cycle and Energy Security
- Coastal Landscapes and Change

### Unit 2—Human Geography - Exam 30% weight

- Globalisation
- Shaping Places
- Superpowers
- Global Development and Connections
- Regenerating Places

or

- Diverse Places
- Health, Human Rights and Intervention or Migration, Identity and Sovereignty

### Unit 3—Synoptic—Exam 20% weight

- Players
- Attitudes and actions
- Futures and uncertainties

### Unit 4

Coursework—Independent investigation— 20%



## Careers in Geography

- Research
- International Development
- Teaching
- Finance
- Environmental Consultancy
- Logistics
- Analytical jobs
- Town planning

## Suitable Candidates

Suitable candidates will have studied GCSE Geography and obtained a grade 6.

In addition to this, candidates will have a natural interest and passion for Geography.

For further information regarding Geography, please see Miss Hayes.

# A Level Art and Design

## Entry Requirements

Minimum of 5 GCSEs at grade 9-5 including English and Maths and grade 6 in GCSE Art.

## Art & Design at Westfield

The Edexcel A level in Art and Design has been designed to ensure that not only practical artistic skills and abilities are developed, but also that the study of art and design and its various contexts form part of the programme too.

### Aims:

- Developing your own ideas through sustained and focused investigations about your own and other artists work.
- Explore and select materials that are appropriate for your investigations; refining and reviewing.
- Recording ideas and observations relevant to your own ideas.
- Present a personal and meaningful response based on your supporting study.

You will need to complete 4 units of work:

- **Unit 1:** Personal Portfolio - 25% of overall grade
- **Unit 2:** External Exam - 25% of overall grade
- **Unit 3:** Personal study– 25% of overall grade
- **Unit 4:** External Exam– 25% of overall grade

Workshop experimentation focuses on:

- Still life
- Mixed media
- Printmaking
- Painting and drawing



## Careers in Art & Design

- Architect
- Art director
- Calligrapher
- Fashion Illustration

## Suitable Candidates

Someone who is interested in expanding their art skills and building on their GCSE knowledge. They should be hardworking and willing to continue to work independently and also be able to discuss and explore new materials and techniques.

For further information regarding Art & Design, please see Mrs Bastienne- Andrews

# A Level Photography

## Entry Requirements

Minimum of 5 GCSE's at 9-5 and a grade 5 at GCSE Art.

## Photography at Westfield

A level Photography will be a new addition to the course list on offer at Westfield Academy. The Edexcel A level in Photography has been designed to show students how to produce good quality imagery both using the camera equipment as well as in the editing processes.

### Aims:

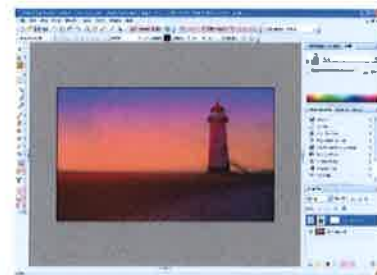
- Developing your own ideas through sustained and focused investigations about your own and other artists work.
- Explore and select materials and process that are appropriate for your investigations; refining and reviewing.
- Recording ideas and observations relevant to your own ideas.
- Present a personal and meaningful response based on your supporting study.

You will need to complete 4 units of work:

- **Unit 1:** Personal Portfolio – 25% of overall grade
- **Unit 2:** External Exam – 25% of overall grade
- **Unit 3:** Personal Study – 25% of overall grade
- **Unit 4:** External Exam – 25% of overall grade

Workshop experimentation focuses on:

- Photoplus
- Manual editing
- Lighting



## Careers in Photography

- Commercial Photographer
- Photojournalist
- TV or Film camera operator
- Graphic Designer
- Web Designer

## Suitable Candidates

This course would suit someone who is keen to expand their interests in composition and design through Photographic imagery. They should be able to show creativity and have an enthusiasm to develop personal ideas in their work. They should be hardworking and willing to continue to work independently and also be able to discuss and explore new materials and techniques, as well as digital.

For further information regarding Photography, please see Mrs Bastienne- Andrews



# A Level Music

## Entry Requirements

5 GCSE's at grade 6+ including Music GCSE grade 6.

## Music at Westfield

This course builds directly on the foundation of the GCSE Music Specification. The course will give students the opportunity to develop their knowledge, understanding and skills of music whatever their previous experience. Suitable for Music progression beyond KS5.

## **Course Content**

### **Component 1 – Performing 30%**

- A public performance of one or more pieces, performed as a recital.
- Performance can be playing or singing solo, in an ensemble, improvising or music technology.
- The total performance time across all pieces must be a minimum of 8 minutes.
- Performances will be recording in year 13.

### **Component 2 – Composing 30%**

- One brief composition set by Edexcel.
- One free composition (or another brief).

### **Component 3 – Appraising 40%**

- Knowledge and understanding of musical elements, contexts and language.
- Application of knowledge through the context of 6 areas of study.
- Application of knowledge to unfamiliar works.



## Careers in Music

- Producer
- Songwriter
- Music Therapist
- DJ
- Radio
- Composer
- Program Director
- Teacher
- A&R coordinator

## Suitable Candidates

Candidates will be hardworking, motivated and independent learners with a dedication to practise and self-discipline. Students also need to have a keen interest in wider music and music theory.

For further information regarding Music, please see Mrs Ho.



**For any further information contact Mr Shah ( Head of RE) or Ms Egan (Head of Humanities).**

# A Level Sociology

## Entry Requirements

Minimum of 5 GCSEs at 9-5 including a grade 6 in English and grade 5 in Mathematics.

## Sociology at Westfield

Why do girls tend to do better than boys at school? Why are lone-parent families on the increase, and what has happened to the traditional nuclear family? Why are young black males more likely to be stopped and searched by the police? How are the forces of globalisation changing our everyday lives? These are just some of the interesting questions and issues that concern A Level Sociologists.

### **Course Content**

#### **A Level:**

- Families and Households
- Education & Research methods
- Crime and Deviance & Theory
- Beliefs in Society

In addition, students learn about sociological theories that help us to explain trends in society, as well as research methods used to gather information.



## Careers in Sociology

- Lecturing
- Social work
- Journalism

## Suitable Candidates

Candidates will be curious about the world they live in and be prepared to challenge the 'everyday' things that appear 'normal'.

A skill in debating issues and putting forward well-supported views will be an asset.

For further information regarding Sociology, please see Ms Choudhury

# A Level Psychology

## Entry Requirements

Minimum of 5 GCSEs at 9-5 including Maths, English and Biology at grade 6.

## Psychology at Westfield

Human behaviour is complicated and so psychology has a number of different approaches that tries to explain this behaviour. This A-level course introduces students to some of these approaches, as well as developing students' understanding of psychology as a science with rigorous research methods.

### Aims:

The aim is to encourage an interest in and appreciation of psychology through an exploration of the ways in which psychology is conducted. This exploration includes:

- Developing a knowledge and understanding of a number of important research studies.
- Undertaking practical exercises that encourage an understanding and application of key research methods within psychology.

The A-level examines a number of core approaches to explaining human behaviour including cognitive, behavioural, developmental, social and psychodynamic approaches. For example, the cognitive approach examines what memory is and how we use it, while the developmental approach examines how we form attachments as small children. Within social psychology students learn about conformity and why people learn to obey others, while in psychological differences, students examine abnormal behaviour. In addition, students will be introduced to psychological research methods including observations, and how these techniques are used to measure people's behaviour.



## Careers in Psychology

- Forensic Psychology
- Clinical Psychology
- Children's Psychology
- Occupational Psychology
- Criminology
- Education
- Police Force

## Suitable Candidates

If you are a student with a keen interest in understanding human behaviour and finding explanations for this, then Psychology is the course for you. You must be inquisitive, open to new ideas and vocal with your thoughts. This doesn't go without hard work and a lot of independent study.

For further information regarding Psychology, please see Ms Choudhury



# A Level Business (AQA)

## Entry Requirements

A minimum of 5 GCSEs at 9-4 including English and Maths at grade 5.



## Business Studies at Westfield

This A-level course introduces students to the process of starting a small business, including how ideas are generated, planned and managed. You will study a range of topics including; Business Planning, Finance, Marketing, Operations and People Management, Strategies for success and the Business Environment.

### Aims:

The aim is to encourage an interest in and appreciation of business through practical application of business theory towards enterprise projects. This course involves:

- Developing a knowledge and understanding of business theory and case studies.
- Undertaking practical projects that involve applying business theory to come up with and manage your own business.

The A-level aims to develop the students' knowledge and skills needed to analyse data, think critically about issues and make informed decisions – all skills that are essential for ensuring success at university and in employment. You will learn what a business is, management and leadership skills, as well as the different ideologies behind decision making.

This A level is comprised of the exams which will be sat by the pupils at the end of the course. The question papers use a variety of assessment styles including multiple choice, short answer, data response, essay and case studies so that students feel more confident and engage with the questions.

## Careers in Business

- Business Analyst
- Human Resources
- Management
- Marketing
- Entrepreneurship
- Accountancy Financial
- Investment
- Consultancy Education

## Suitable Candidates

If you are a student with a keen interest in understanding how businesses and the economy work, are driven by the desire to set up a business and be your own boss, then Business Studies is the course for you. You must be inquisitive, open to new ideas and vocal with your thoughts.

This doesn't go without hard work and a lot of independent study.

For further information regarding Business Studies, please see Mrs Otung